

**WORKSAFE**  
NEW ZEALAND | MAHI HAUMARU  
AOTEAROA



3 HOURS OF LBP POINTS

# CONSTRUCTION

## The Health and Safety at Work Act in practice

# THE HEALTH AND SAFETY AT WORK ACT IN PRACTICE

- » Why we're all here today
- » What's happening in your region
- » Managing your health and safety risks
- » Working together to ensure that **everyone who goes to work comes home healthy and safe**

# WHY WE'RE ALL HERE TODAY

## Construction Sector Fatalities 2013-2016 (to Sept)



**19**  
FATALITIES  
IN TOTAL

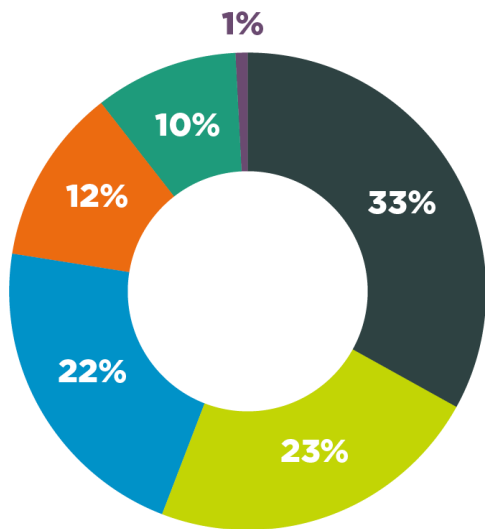
**6**  
FATALITIES  
IN 2016

**WORKSAFE**  
NEW ZEALAND | MAHI HAUHARU  
AOTEAROA

# WHY WE'RE ALL HERE TODAY

## LIFE CHANGING EVENT

### CONSTRUCTION INDUSTRY ~~SEVERE INJURY~~ MECHANISM: 2015



— Body Stressing 33% (1496)

— Vehicle Incidents 23% (1034)

— Falls, Trips and Slips 22% (975)

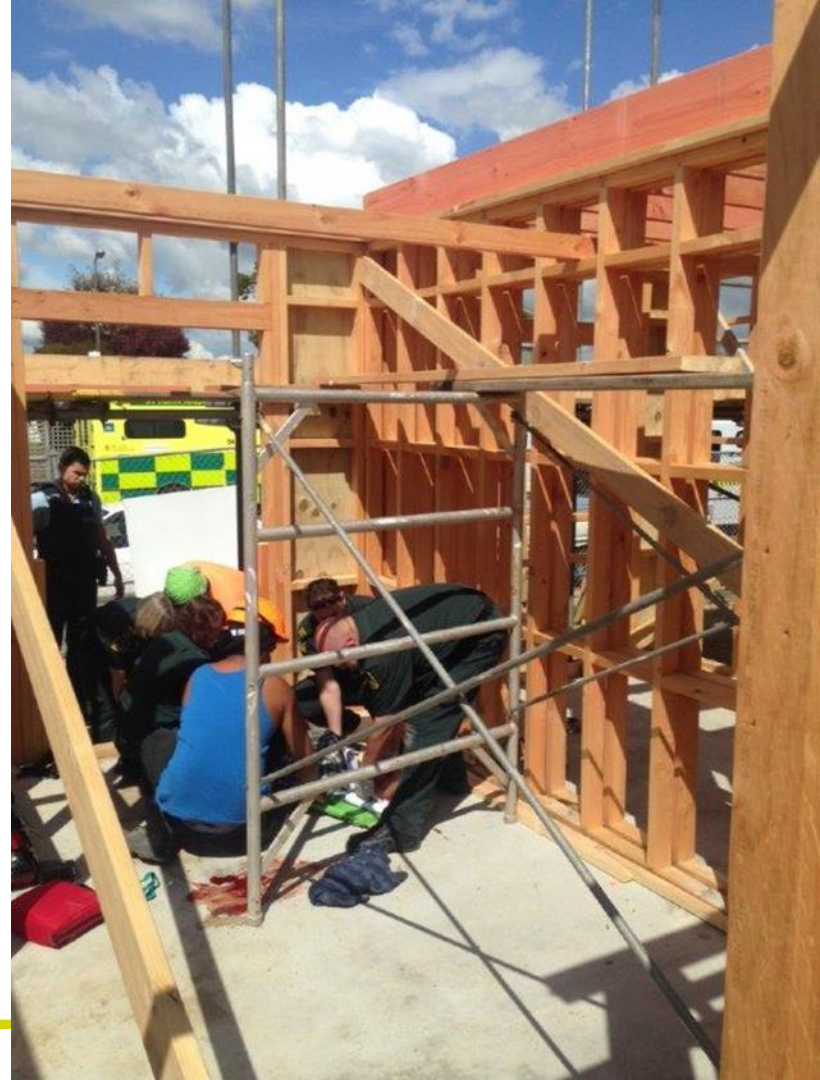
— Hitting Objects with a part of the body 12% (538)

— Being Hit by Moving Objects 10% (442)

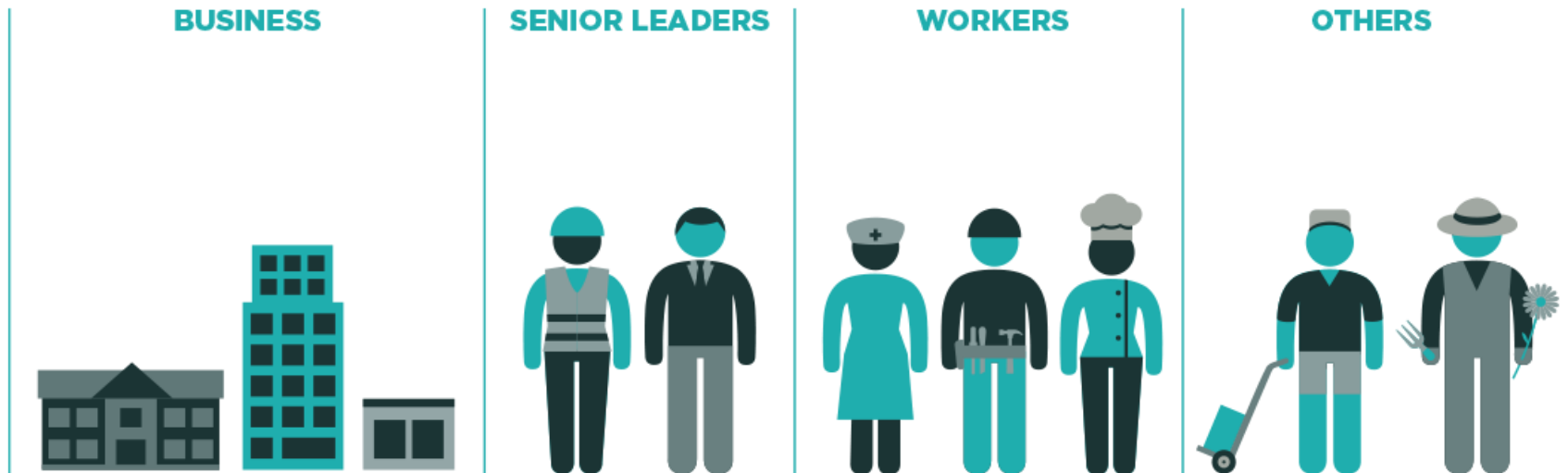
— Other 1% (35)

# A LIFE CHANGING EVENT

- » This man has been in construction for 40 years
- » He'd never had an accident ... until this day



# EVERYONE HAS A ROLE TO PLAY



# WHERE SHOULD YOU START & WHAT ARE WE LOOKING FOR?

## 1 PLAN

- > How are you planning your site activities?
- > How are you involving your workers in identifying risks?

## 2 DO

- > What are you doing to manage the risks?
- > What systems and processes do you have in place?

## 3 CHECK

- > How do you monitor your risks & control measures?
- > How do you adapt to changing circumstances?

## 4 ACT

- > How do you learn from incidents?
- > How do you learn from what's gone well?

I



WHAT THIS  
LOOKS LIKE  
IN PRACTICE



# SITE FENCING



# 1. TO FENCE OR NOT TO FENCE?



## 2. TO FENCE OR NOT TO FENCE?



### 3. TO FENCE OR NOT TO FENCE?



## MOBILE PLANT & EXCAVATIONS



# 1. TO SHORE OR NOT TO SHORE?



## 2. TO SHORE OR NOT TO SHORE?



### 3. TO SHORE OR NOT TO SHORE?



## CONSTRUCTION DUST



# 1. DUST – WHICH CONTROL IS BEST?



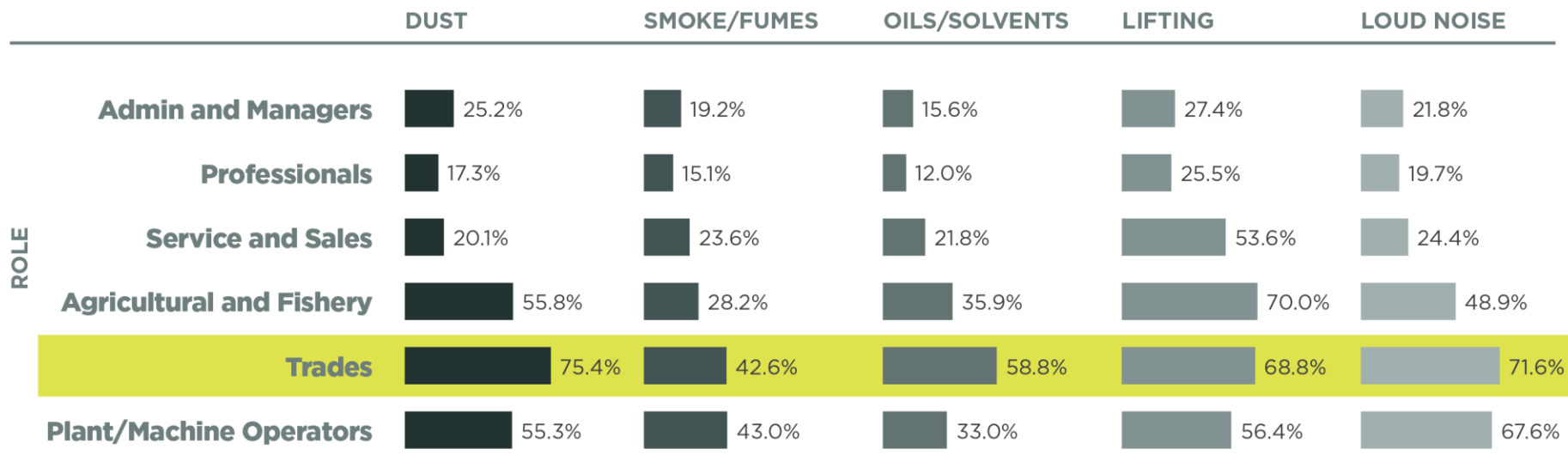
## 2. DUST – WHICH CONTROL IS BEST?



### 3. DUST – WHICH CONTROL IS BEST?



# WORK RELATED HEALTH



Proportion of workers reporting being exposed to different health hazards at work

# SKIN CANCER – BE SUNSMART

- » **Skin cancer** is NZ's most common cancer – 69,000 cases a year
- » Most skin cancers are **caused by the sun**
- » Keep safe by **covering skin** and using a broad spectrum **SPF 30+ sunscreen**
- » Where possible, work and take breaks in the shade
- » Download the free **uv2day** phone app



SLIP  
SLOP  
SLAP  
WRAP





# WHAT SHOULD YOU DO IF SOMETHING HAPPENS?

You must notify WorkSafe if there is a serious work related health or safety event including:

- » A death
- » A severe injury
- » An illness
- » An incident

A large red circle graphic containing text.

**USE WORKSAFE'S  
ONLINE NOTIFIABLE  
EVENTS TOOL**







Google Search

I'm Feeling Lucky

Google.co.nz offered in: [Māori](#)

# KEY TAKE OUTS

- » Too many people are being severely injured or killed on NZ construction sites
- » Know your health and safety risks
- » Manage those risks – **Plan, Do, Check, Act**
- » We need to work together to ensure that **everyone who goes to work comes home healthy and safe**

# Questions

**EVERYONE WHO GOES TO WORK  
COMES HOME HEALTHY AND SAFE**

**WORKSAFE**  
NEW ZEALAND | MAHI HAUMARU  
AOTEAROA